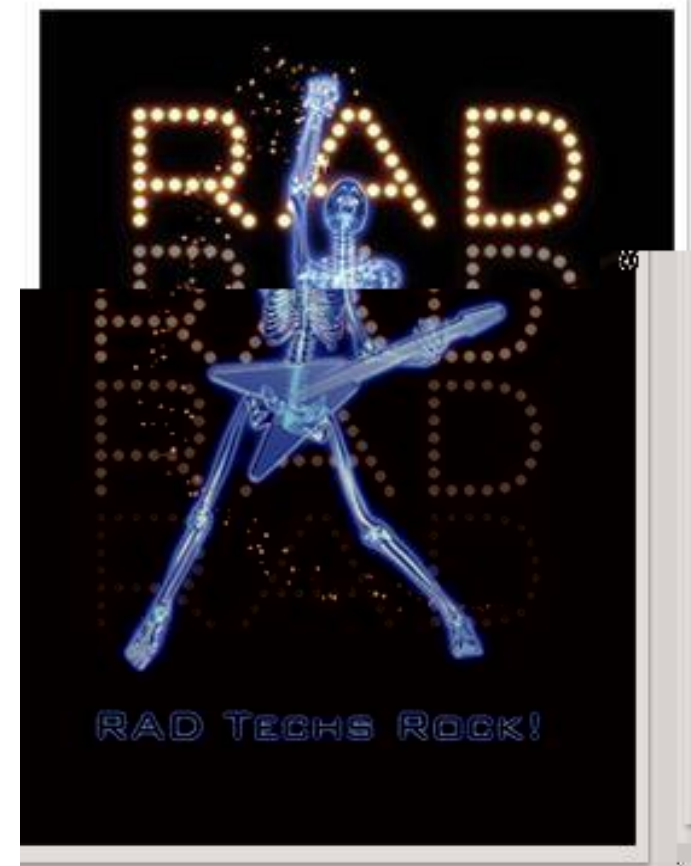




Erica Longbine, R.T.(R)(ARRT), CPC

Registered Radiologic Technologist
Certified Professional Coder
URMC DIS Clinical Trials Coordinator



Imaging Sciences Clinical Trials Office

Assists departments throughout the University with their trials imaging needs.

- Cancer Center, Pulmonary, Orthopedics, Ophthalmology, Cardiology, Alzheimer's group, Urology, etc.
- Last 4 years = 437 trial requests and counting

Provide quotes and paper requisitions, review all study protocols, technologist communications (i.e. scanning parameters, training, etc.), specialty read set-up and much more.

Wilhelm Röntgen's first "medical" X-ray, of his wife's hand, taken on 22 December 1895



Imaging Sciences Clinical Trials Office

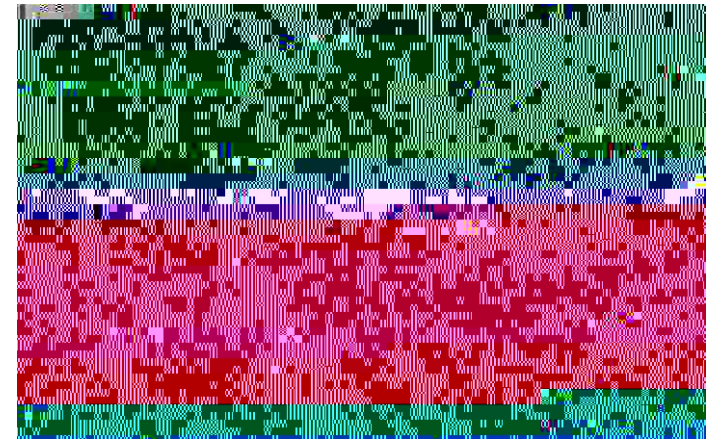
Link for our Department:

- <https://www.urmc.rochester.edu/imaging/research/clinical-trials.aspx>

Email:

- RadClinicalTrials@URMC.Rochester.edu

Taking an X-ray image, late 1800s.

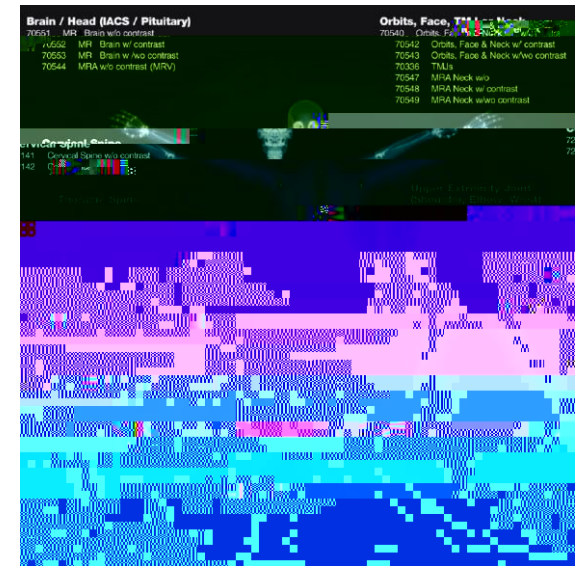


Imaging Sciences Clinical Trials Office

Obtaining a Quote for a New Clinical Trial:

- For research imaging needs, please complete the Imaging Clinical Trial Request for Quotation Form with as much information as possible. Email the completed form along with the study protocol, imaging manuals and/or lab manuals if available.
- Based on the information you provide, we will identify the exams/procedures required to meet your trial needs, determine the corresponding CPT codes, and estimate exam cost discounted to reflect your funding source. Fees are based on the CPT code and any associated incidental hospital supply charges. Service needs that arise later, would of course be additionally billable.

Current Procedural Terminology (CPT) is a medical code set that is used to report medical, surgical, and diagnostic procedures and services to entities such as physicians, health insurance companies and accreditation organizations. CPT codes are used in conjunction with ICD-10-CM numerical diagnostic coding during the electronic medical billing process.



78816 - PFT/CT/DC Snap, Vary Skill to Test
 71260 - CT Chest with contrast

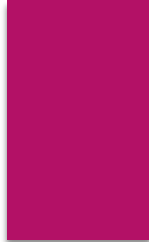
ORDERING / ORDERING PROVIDER: Pager:
 ESTIMATED:

71550 - MRI Chest without & with contrast
 71402 - MRI Abdomen

71871 - MRI Pelvis without & with contrast

INTERVENTIONAL RADIOLOGY PATIENTS - PUT IN PATIENTS
 Radiologist may administer or withhold contrast at their discretion.

Interventional Radiology Patients: Is patient on an anticoagulant? Yes No



Imaging Sciences Clinical Trials Office

Image Management:

- We are an electronically archived department. All studies are acquired digitally and transmitted to our picture archiving and communication system (PACS). We are unable to block images and reports from the various electronic record systems.
- The study coordinator or a member of the study team is responsible for obtaining

Thank you!

We look forward to a successful study! Please contact us throughout the course of the trial if your needs change or your subjects have trouble within our department.

