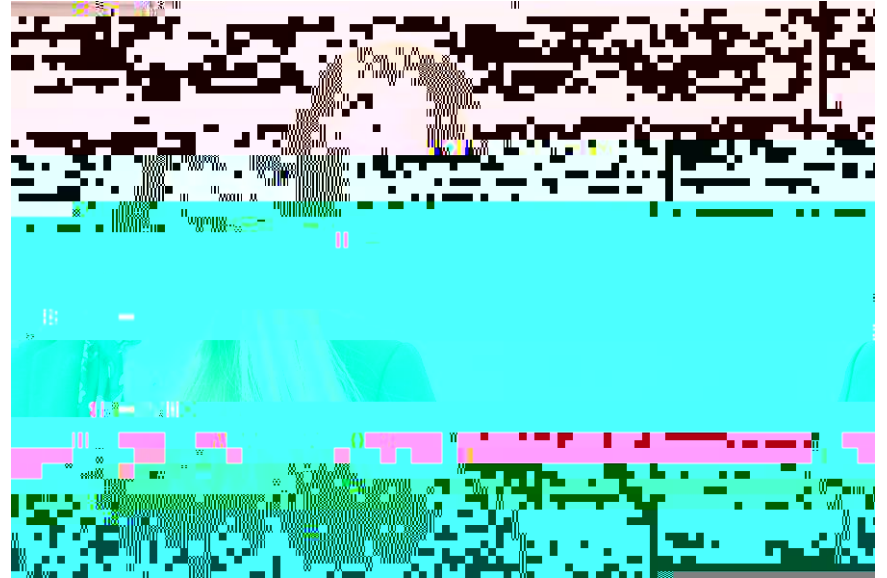




The Office of Clinical Research (OCR)

Ashlee Lang, MPH, Director



Agenda

OCR Overview

OnCore

Feasibility

Research Finance

Payments

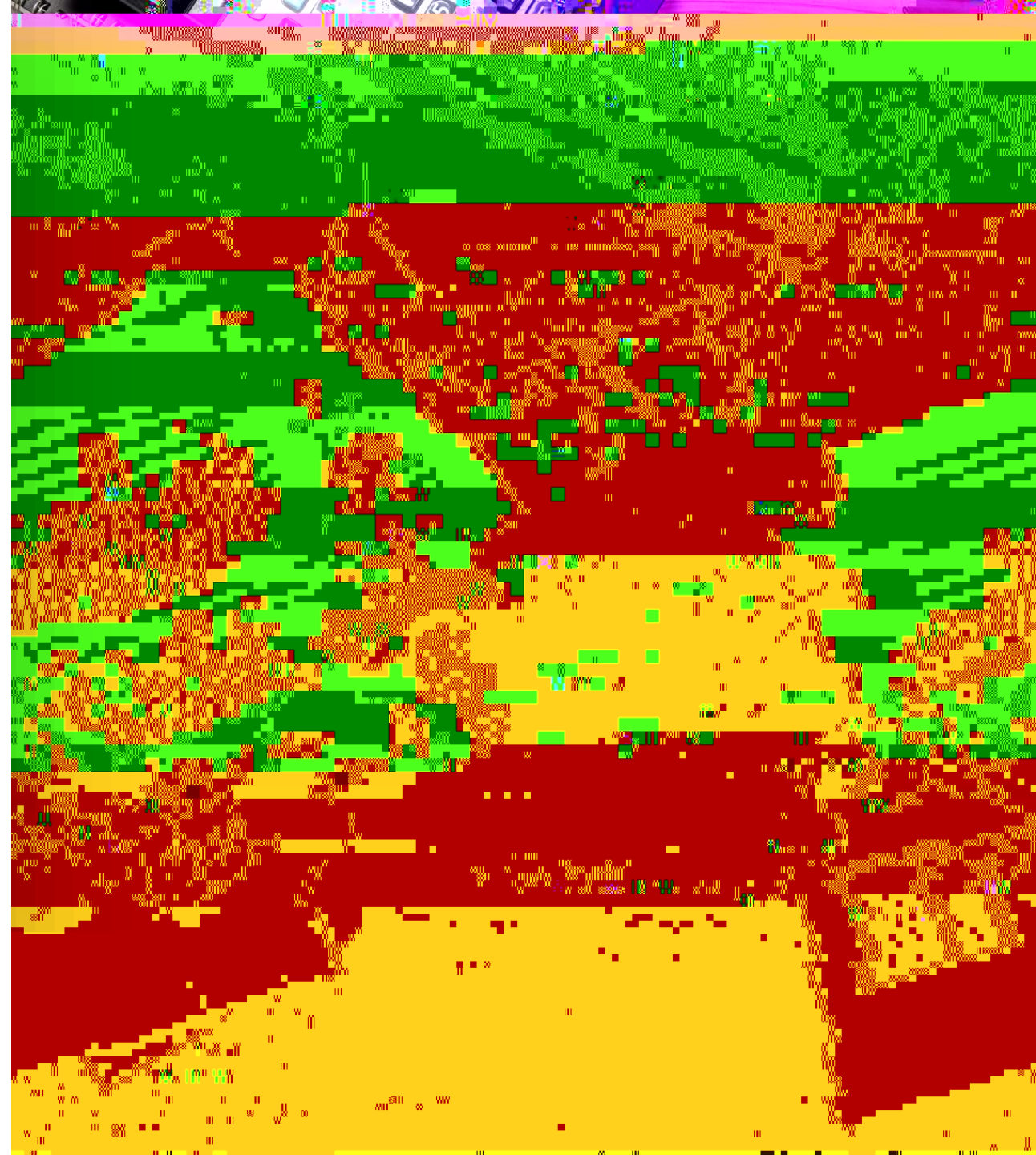
The Next 6 Months

Communications

Working Groups

Start Up Manual

The Next 6 Months



OCR: Who We Are

OnCore

Phase 1 was initiated in 2018 offering URMC researchers the option to use OnCore to support

Phase 2 will be implemented over the next 18 months to roll out an institutional policy with tiered requirements for OnCore use





Feasibility

Our team helps assess the feasibility of proposed clinical studies and develop meaningful metrics to help guide how URMC study teams manage clinical studies

Assist with completion of feasibility surveys

Tailored feasibility and breakeven analysis

Cohort discovery with TriNetX and Slicer-Dicer (Epic)

Research Finance

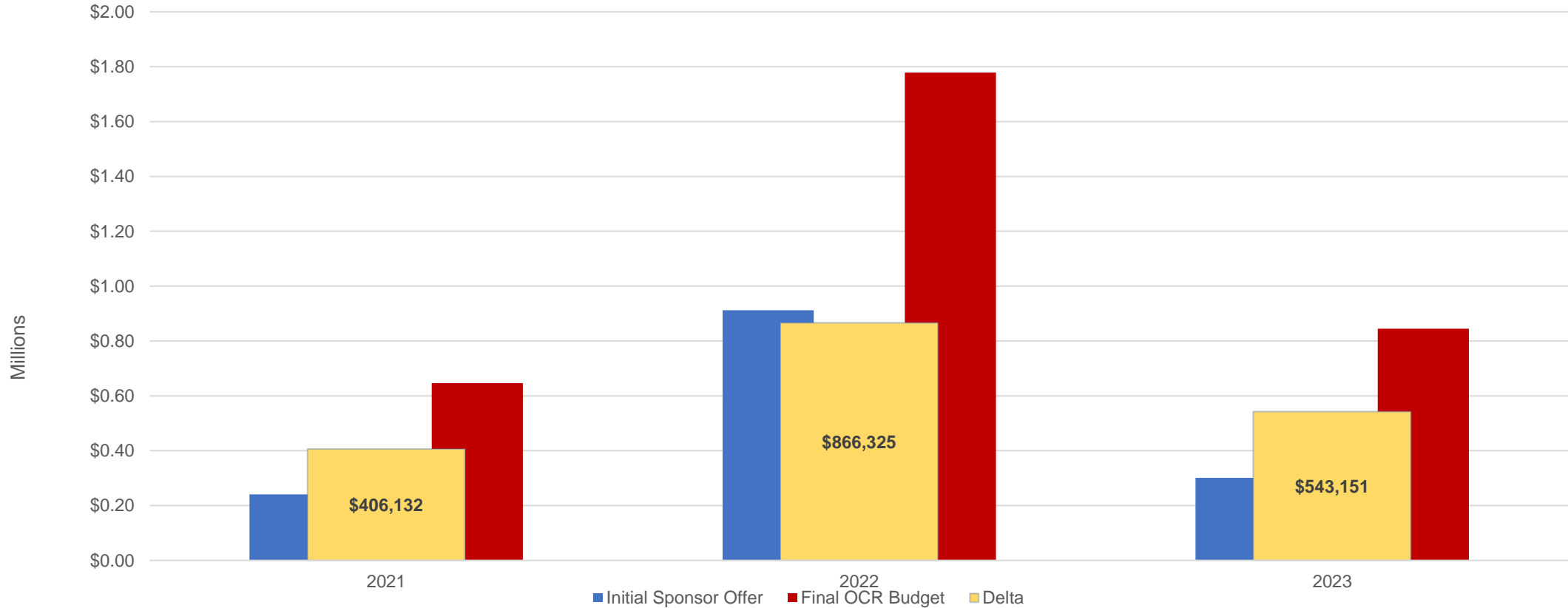
Pre-Award Services:

Medicaid/Medicare coverage,
analyze the study cost and timeline,
negotiate budgets with sponsors,
and enter budget information into
OnCore.

Post-

Research Finance

OCR Finance ROI



Participant Payments

Participant Payments is a safe, secure automated system that helps immediately pay subjects after each clinical study visit.

Integrated with OnCore, Participant Payments eliminates manual and inefficient processes, so research teams can spend less time on administrative tasks and focus on patient care.





Communications

The OCR Exchange

Quarterly Email Newsletter

News

Updates

Refreshers / Reminders



Communications

Introductory Survey

Survey sent to all OnCore users and all
Research Liaisons News (April 12th
March 12th)

115 responses

Next Steps:

Review data by Institution/URMC
as a whole and by

department/division v.C /Span 4 MCID 9 La 0 1 10954 202.8 Tm0 g0 Gr.7w4 Gr/q0

OCR Working Groups

Start Up Manual Working Group	Start Up Manual complete and published
Charge Master Working Group	Scheduled to begin in May 2024
Amendment Working Group	Scheduled to begin in September 2024
Feasibility Working Group	Next meeting scheduled July 2024

Start Up Manual

Resources

The QCD provides information on the various resources available to researchers and staff. This information is intended to help researchers and staff understand the various resources available to them and how to access them. The QCD provides information on the various resources available to researchers and staff. This information is intended to help researchers and staff understand the various resources available to them and how to access them.



Table of Contents

Business Agreement Process	2
Sponsor/CHSP as a VC Process	7
CHSP	6
CHSP Selection	8
Financial Process	12
Break-Through High-Potential CHSP	14
Start-Up Activation	15

The manual provides information on the various resources available to researchers and staff. This information is intended to help researchers and staff understand the various resources available to them and how to access them.

The Next 6 Months

Update OnCore Demographic (SOGI) Mapping from eRecord
eReg implementation
Workday integration update
OnCore Task Lists
OnCore Notifications
Charge Master Updates
Amendment Manual
OnCore Training Offerings Diversification
Departmental Meetings



Thank you!

Office of Clinical Research:

clinical_research@urmc.rochester.edu
