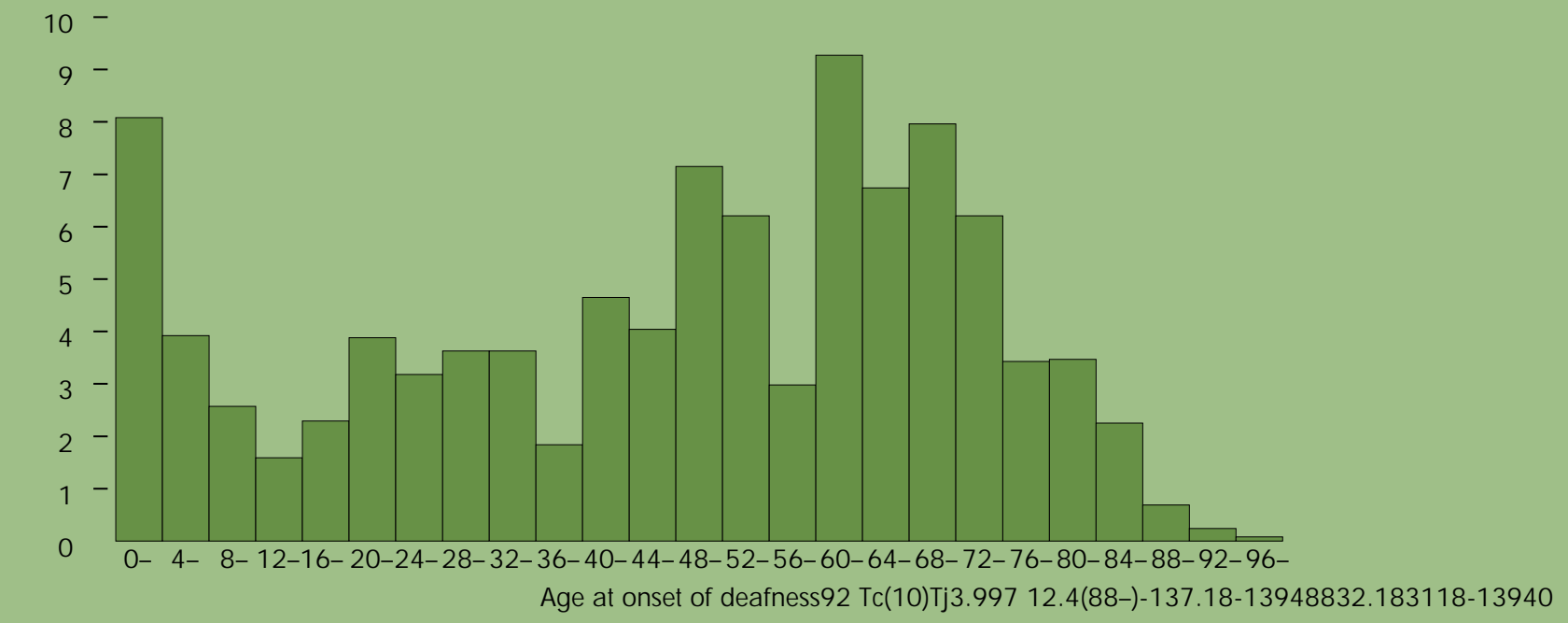


## NHIS Research

Figure 2. Percent distribution of age-at-onset of deafness for deaf adults



## Conclusions

Our analyses of NHIS data identified new avenues for research that led to resources for researcher-community collaborations that will continue to be instrumental in identifying and addressing health and healthcare disparities experienced by deaf people and their families.

## Acknowledgments

Thank you to Peter Franks, M.D., co-investigator on the NHIS research presented here.

The NHIS research was supported by grant R03 HS09539 from the Agency for Healthcare Research and Quality.

Dr. Barnett is supported by grant K08 HS15700 from the Agency for Healthcare Research and Quality.

## Contact Information

Steven Barnett, M.D.  
University of Rochester Department of Family Medicine  
Family Medicine Research Programs  
1381 South Ave, Rochester NY 14620  
Voice: (585) 506-9484 ext 110  
TTY: (585) 461-4902  
Fax: (585) 473-2245  
Steven\_Barnett@URMC.Rochester.edu