

# Integrated OPWDD Care Coordination Program

in partnership with Person-Centered Services and Prime Care Coordination

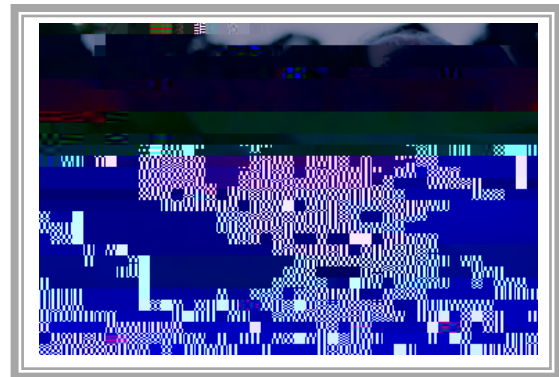
## What does “integrated” mean?

Integrated means we all work together for the same goals.

Care Coordinators will work with you, your caregiver(s), and your medical and specialty service providers at the Complex Care Center. As a team, everyone will come together to address your health and wellness needs.

## How will this program help me?

- **On site access** to your Care Coordinator. One location, the Complex Care Center, where you can access several of your providers.
- **More connections** to care and support, covering all areas of your life. Care Coordinators have more access to resources and providers. They will be part of the Complex Care Center’s integrated team.
- **Less waiting** for the care and services you need. The team approach will make it easier for service providers to work together to support you.



## Am I eligible for this program?

You can take part in this program if:

- You are a patient of the Complex Care Center.
- You are eligible for services with the Office for People With Developmental Disabilities (OPWDD).

## What does this cost?

If you are eligible for this program, there is no additional cost to you.

**If you have questions or you’d like to sign up for this program, please call:**

Complex Care Center  
Care Management Supervisor  
**(585) 276-7900**