

**KAWASAKI STEEL TECHNICAL REPORT**

No.13 ( September 1985 )

---

**Development of Energy System**

Toshiharu Maezawa, Shigeru Komiyama, Shyougo Nanbu, Takashi Minematsu, Shigeo Abe

---

**Synopsis :**

Chiba Works has developed the newest and most-advanced energy system which centralizes the information of energy supply and demand. The purpose of this system is to achieve efficient operation by transforming one energy to another. This energy system is automatically linked to the production administration system which issues orders to production facilities, and operates energy supply and demand jointly with production activities. New computer technologies and the hierarchical structure of computers have realized the system which consists of a business computer system, process computer system and direct digital control system. This energy system has contributed to saving in energy and labor costs in Chiba Works.

(c)JFE Steel Corporation, 2003

**The body can be viewed from the next page.**

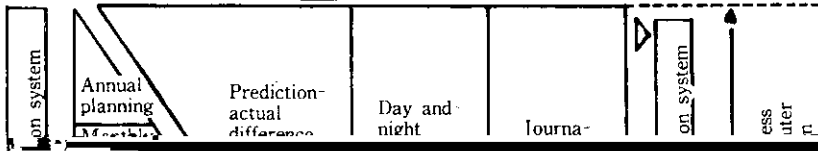
# Development of Energy System\*

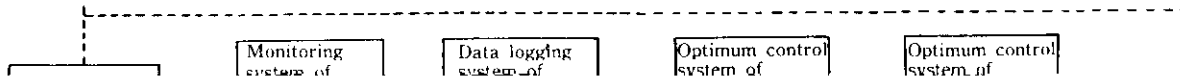
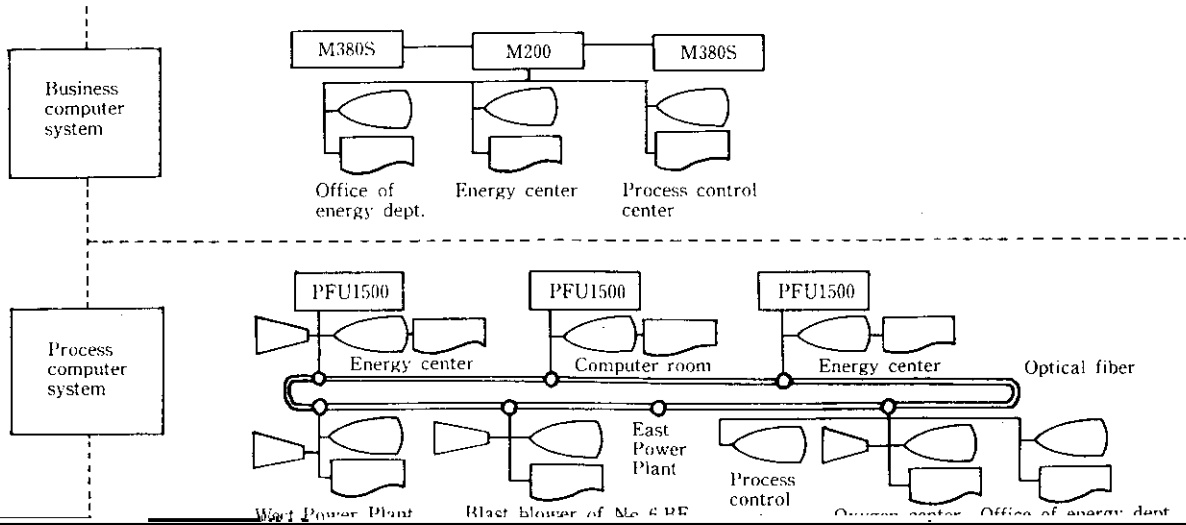


*Synopsis:*

*Chiba Works has developed the newest and most-*

Actual data







generation and use, the P/C system effectively utilizes

[REDACTED]

[REDACTED]

[REDACTED]

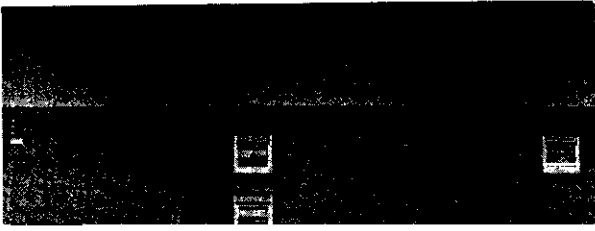
[REDACTED]

[REDACTED]

[REDACTED]

[REDACTED]

[REDACTED]



### 3 System Feature

#### 3.1 Optimization of Supply and Demand in Unification with Production Activities

Energy supply and demand at the steelworks are closely related to production activities. Taking this into



advantage of the difference between day and night

Power consumption turns beneficial to the source — demand and supply