

Dry-in-Place Chromate-Coated Electrogalvanized Steel Sheet with High Corrosion Resistance, "RIVER ZINC FX"*

Nobuo Totsuka**
Shun-ichi Tsugawa*****

Takao Kurisu***
Masato Kawai*****

Toshio Ichida****

1 Introduction

RIVER ZINC FX is actually a new version of RIVER

mits high-temperature drying. Compared with the previous conversion-type, chromate-coated material, the uniformity of coating thickness is improved.

ZINC F, an organic composite-coated steel sheet with anti-fingerprint characteristics which was a Kawasaki

and a white keytone has been obtained. The new dry-in-place chromate-coated material also has out

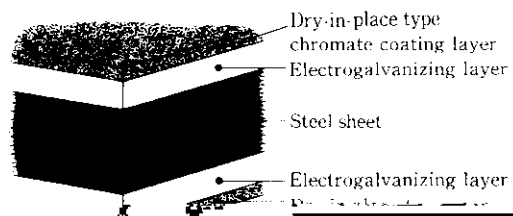


Fig. 1 Schematic diagram of RIVER ZINC FX

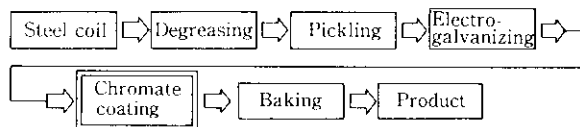


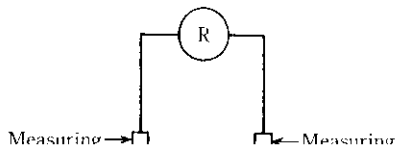
Fig. 2 Manufacturing process of RIVER ZINC FX

sheet, sizes exceeding the above-mentioned ranges are sometimes available.

the steel sheet with an artificial sweat solution and by using the color difference (ΔF) before and after

chromatic difference of the manufacturing process is

the coating. The corrosion resistance of RIVER



5 Concluding Remarks

RIVER ZINC FX is a new dry-in-place, chromate-coated steel sheet having high corrosion resistance, high fingerprint resistance, high solvent resistance and good