

KAWASAKI STEEL TECHNICAL REPORT

No.31 (November 1994)

Special Issue on 'Stainless Steel 'and
' Engineering and Construction'

Construction of a Jacket Type Steel Retaining Wall for the Kisarazu Man-made Island
of the Trans-Tokyo Bay Highway

Keigo Koga, Takashi Hiramoto, Kenshi Furumuro

Synopsis :

The 15-km Trans-Tokyo-Bay Highway will span Tokyo Bay, linking Kawasaki City,
Kanagawa Prefecture with Kisarazu City, Ch

Construction of a Jacket Type Steel Retaining Wall for the Kisarazu Man-made Island of

the Trans Tokyo Bay Highway *



Synopsis:

The 15-km Trans-Tokyo-Bay Highway will span Tokyo Bay, linking Kawasaki City, Kanagawa Prefecture with Kisarazu City, Chiba Prefecture. This national project started in 1987 and is scheduled for completion in 1997

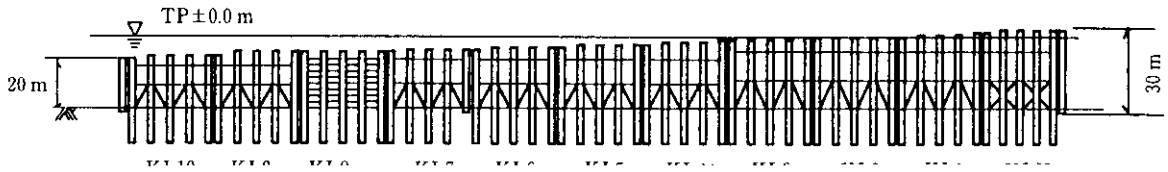


Fig. 2 Jacket type revetment (side view)

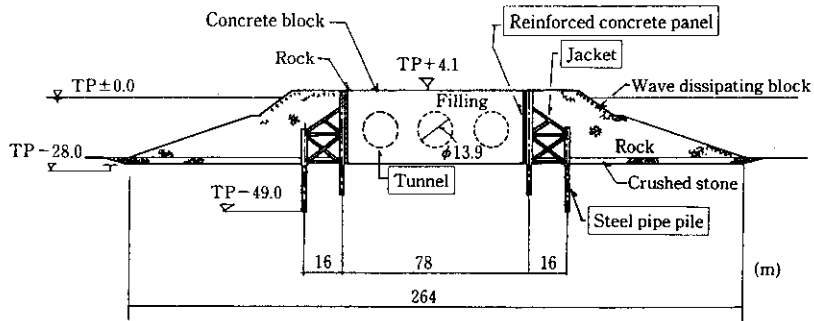
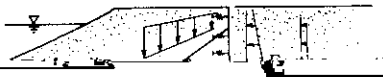


Fig. 3 Typical section of jacket type revetment

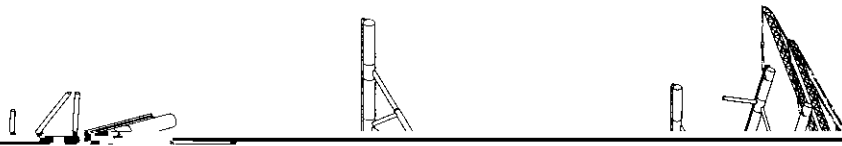
Table 1. Quantity of jacket work

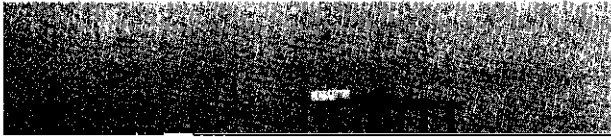
Table 1.1

	Quantity	Remarks	1989	1990	1991	1992
Jacket (t)	10 640	22 Jackets				
Steel pipe pile (t)	8 620	220 pcs				
Work between jackets (t)	640	24 pcs				
			Detailed design			
			Sea bed work			



The quality specifications were as follows: JIS specifications were adopted for steel materials, the WES





tions, each jacket had to be positioned to a very high accuracy in horizontal displacement, height and inclination.

Environmental conditions for installing the jacket:

(1) The...

