

KAWASAKI STEEL TECHNICAL REPORT

No.41 (October 1999)

*Advances in Iron and Steel Technologies,
Commemorating the 30th Anniversary of
Technical Research Laboratories*

Recent Activities in Research of Electrical Steels

Michiro Komatsubara

Synopsis :

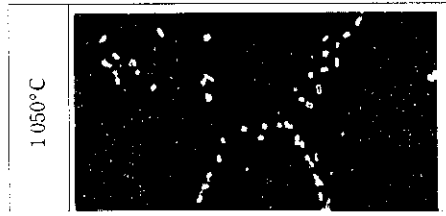
The integrated manufacture of electrical steels in Mizushima Works since 1995 has bestowed upon electrical steel research much development, because the research department has been obliged to rightly reply to many difficult questions as to conditions in operating several new process lines. Especially, the efforts to the progress of electrical steel research have been made on quantitative estimation for adequate values of materials such as components, precipitates, crystal structures, textures, surface

Recent Activities in Research of Electrical Steels*

Synopsis:

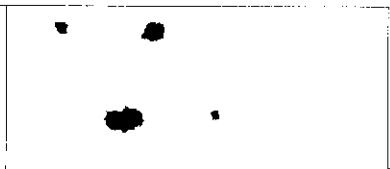
2.1 Research on Desolution-Fine Precipitation Techniques for Inhibitors

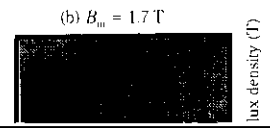
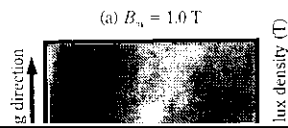
The principal points of this technology are causing the inhibitor to desolute in the steel during slab reheating, and then precipitate finely during working in the hot rolling process



icon steel by the tandem mill, high speed decarburization annealing equipment, and the adoption of rotary hearth continuous furnaces in all the final annealing furnaces. Accompanying this kind of technical innovation, great progress was also made in research on the cold rolling process, particularly for performing decarbur

Time
4 h





3.2 Control of Texture

sheets and other methods have been proposed, these have not reached the stage of adoption, and as in

References

zono, JSAEM, (1996)260
12) M. Ishida, K. Sato, and M. Komatsubara: Papers of Technical Meeting on Metallurgy, MAC OF 20, IJRI (1995)

2) M. Muraki, Y. Ozaki, T. Takamiya, H. Yoshida, and T. Ohara: 13) M. Ishida and K. Sato: Papers of Technical Meeting on Metallurgy, MAC OF 20, IJRI (1995)

MAC OF 20, IJRI (1995)