



TS500 MPa Class Extremely low Carbon Bainitic

## Heavy Gauge H-shapes Having an Excellent Weldability



### 要旨

極低炭素ベイナイト鋼を適用することにより、溶接性に優れた

Table 1 Chemical compositions of steels used

Reheating temperature: 1,200°C × 600 s

Steel	(mass%)					
	C	Mn	Cu	Ni	Nb	B
SM490 class steel	0.14	1.3	—	—	—	—
Extremely-low C bainitic steel	0.02	1.6	Micro-alloyed			

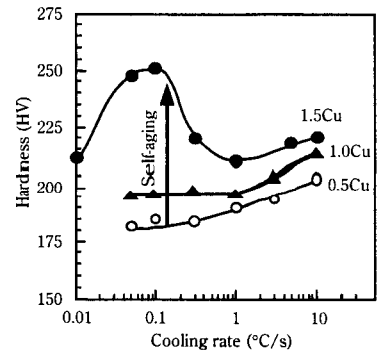
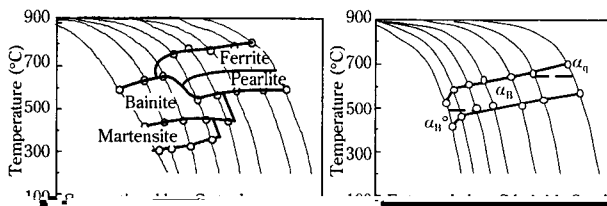


Fig. 3 Effect of Cu content and cooling rate after hot deforma-



● : Developed      ▲ : SA440

Table 6 Tensile test results of welded joints

	TS
--	----

(b) [REDACTED]